

BISCO

Material

3 Types MA 20S / MA 70M / MA 100F

Weight

ca. 380 Kg/m3

Certification

Low flame spread en smoke & toxicity: IMO Res. MSC 61 (67)

Available dimensions:

40 mm wide (other width on request)

Thickness

10 mm

Application

Specific i.c.m. sound-absorbing floor (Druma-Floor NC-SR)

Bisco L3 M 0940 is a full replacement for the traditional one. polyurethane foams, which are used to dampen and cancel vibrations and contact noise on board ships, but do not contribute in any way to fire safety.

For that reason, they can no longer be used on board ships and large yachts, which must be built under IMO / SOLAS regulations.

Bisco L3 M 0940 is a new material with superior properties, is MED certified (low flame spread and smoke & toxicity IMO Resolution MSC 61 (67)) and is resistant to oil, grease and water.

Bisco L3 M 0940 retains its shape under load and performs excellently as a vibration isolator and is therefore ideally suited for use in combination with our newly developed floor system, which is sound-insulating and also MED certified as B-15 floor.

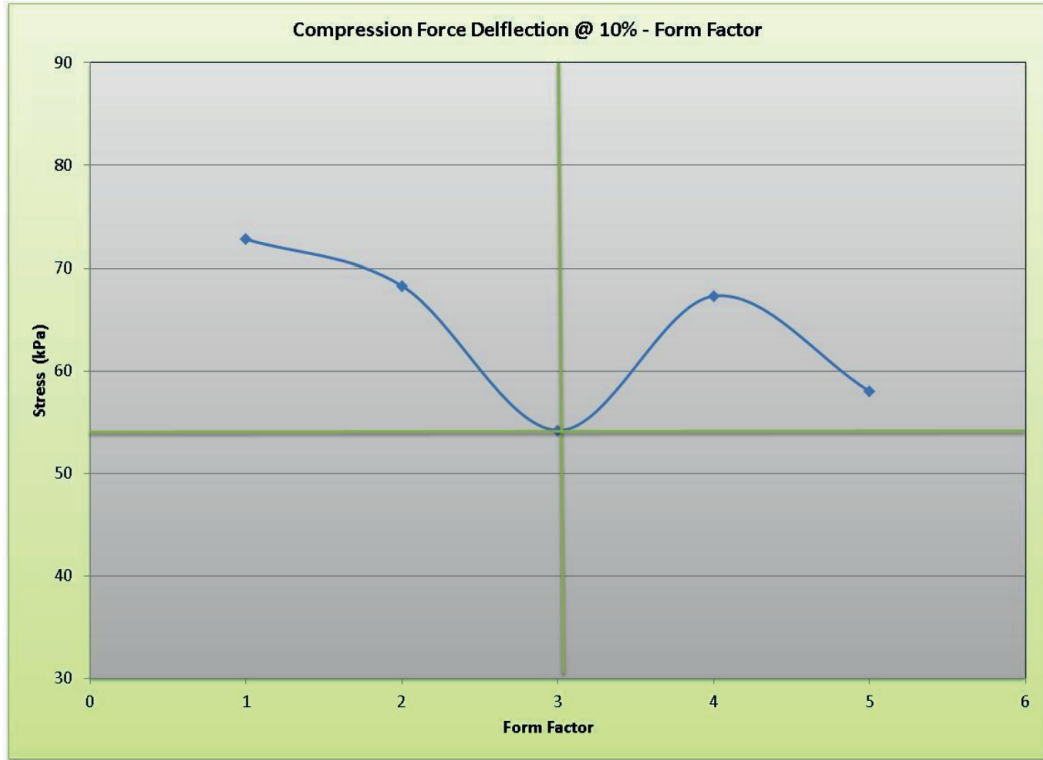
For the specification of this floor, please refer to the Drumafloor NC-SR product sheet.

Physical Properties

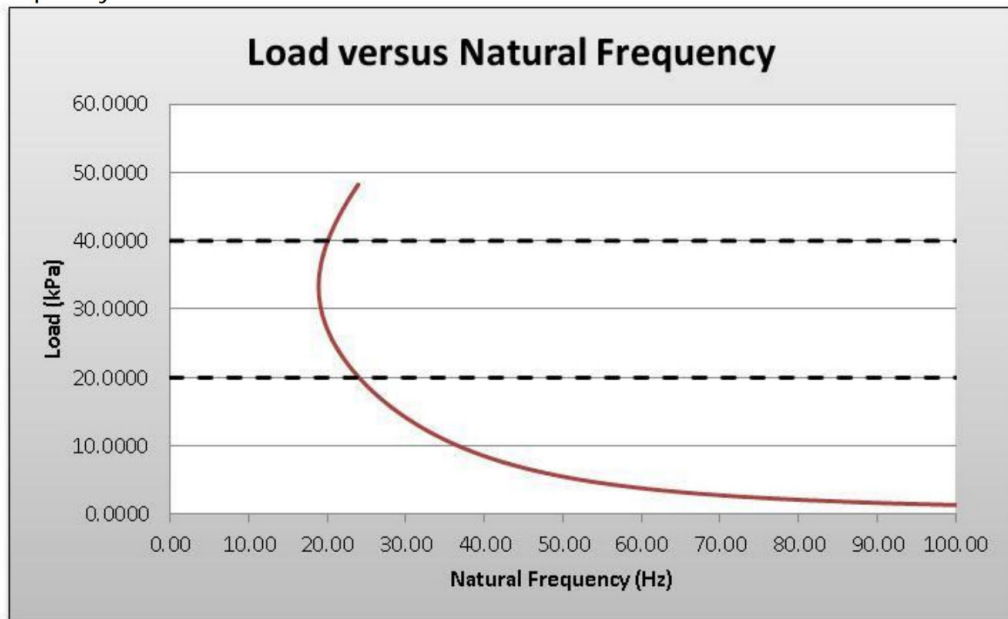
	MA-20S	MA-70M	MA-100F		
				Units	Method
Color	Black	Orange	Gray		
Thickness	10			mm	
Static Load Range	20	70	100	kPa	Internal
Compression Force Deflection	28	110	152	kPa	ASTM D1056
Compression Set	< 5			%	ASTM D1056
Temperature Range	-55C to 200C			Deg C	Internal
Specifications	IMO FTP Part 5 & Part 2				
	MED Module B Certificate				
	MED Module D Certificate (MED-D-1693)				

MA-20S

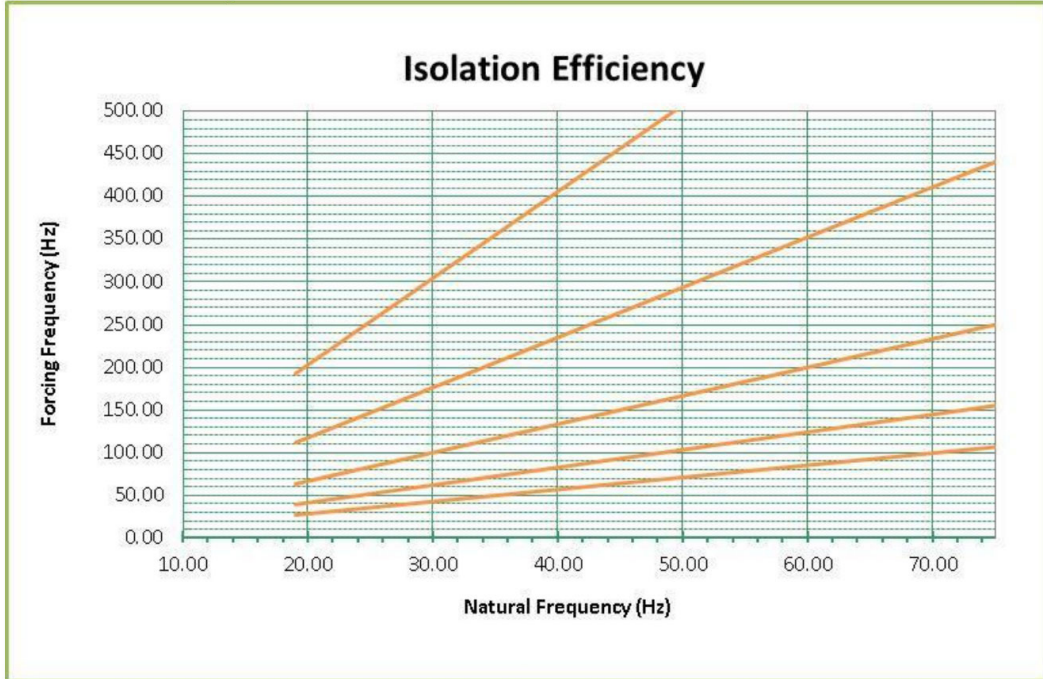
Compression Deflection – Form Factor



Natural Frequency Curve



Vibration Isolation Efficiency

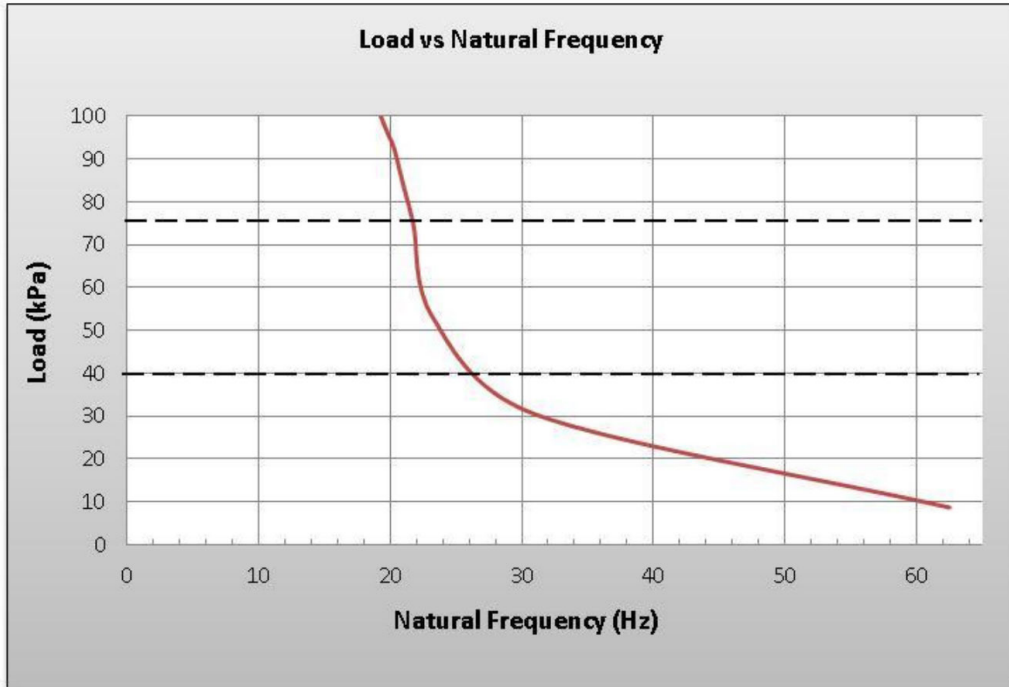


MA-70M

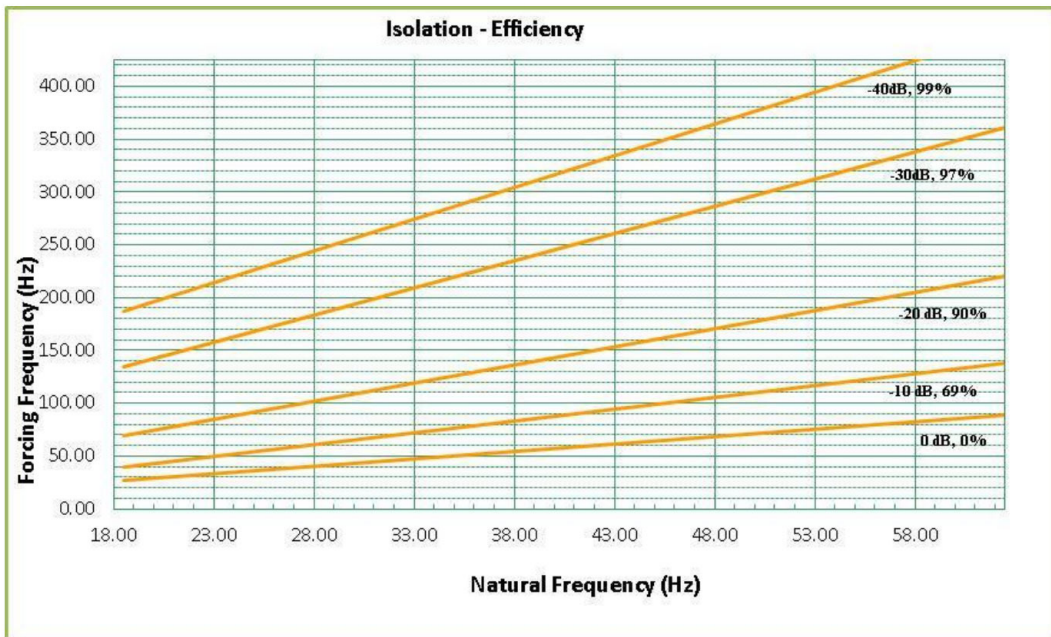
Compression Deflection – Form Factor



Natural Frequency Curve

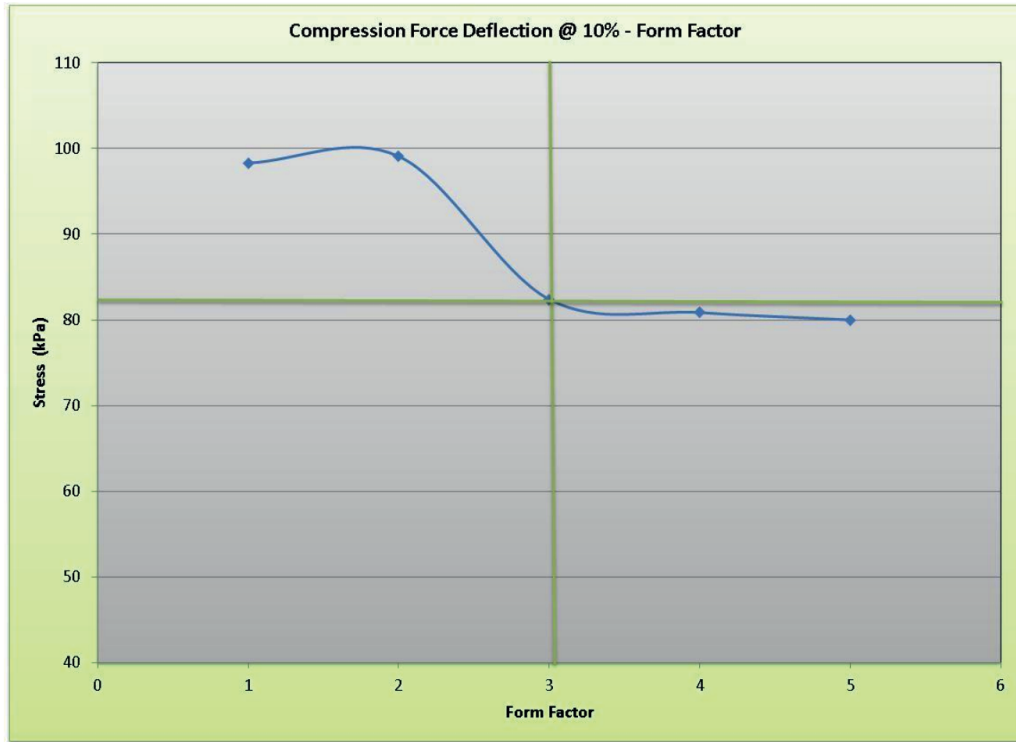


Vibration Isolation Efficiency

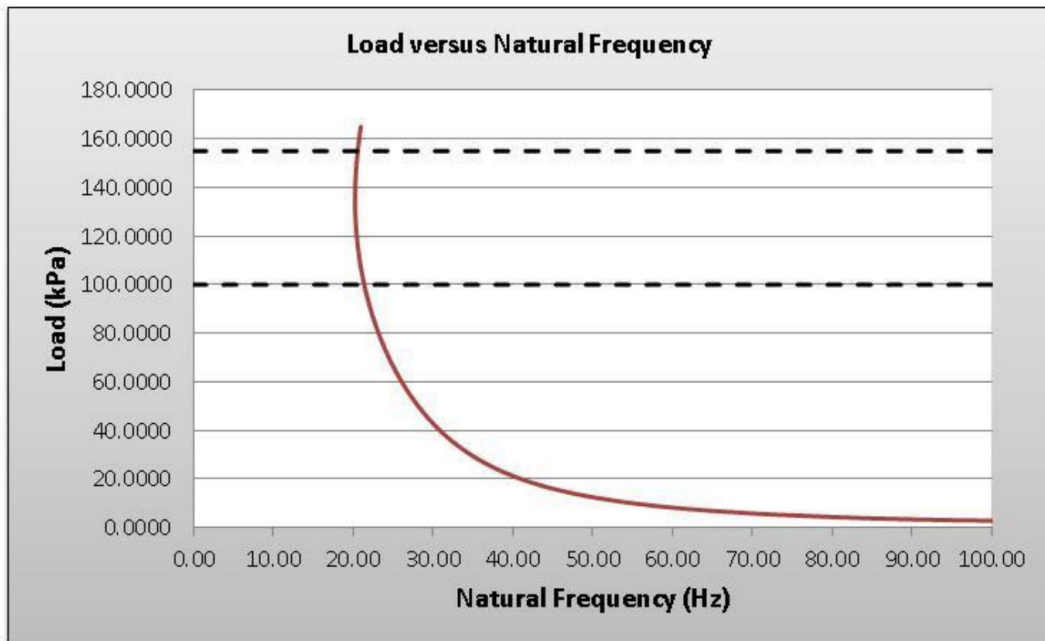


MA-100F

Compression Deflection – Form Factor

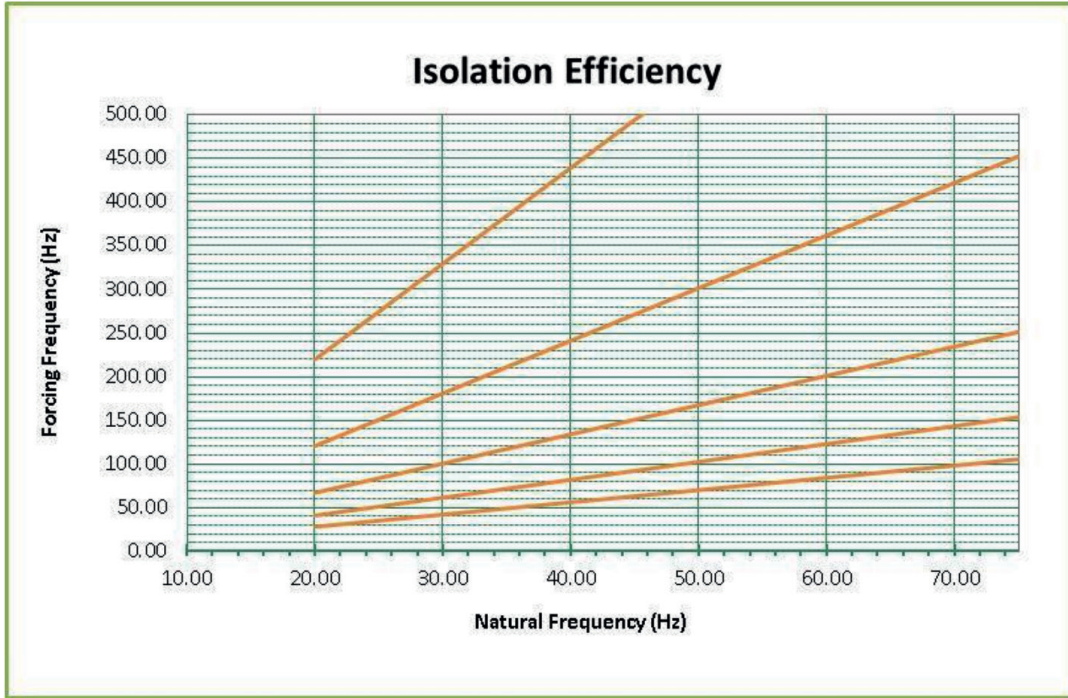


Natural Frequency Curve

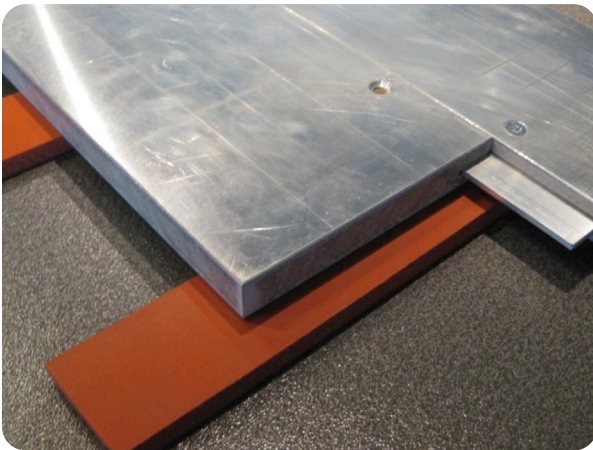


MA-100F

Vibration Isolation Efficiency



BISCO
GALLERY



DRUMA-FLOOR NC/SR

Noise reduction

RW 34 dB

Thickness

17 mm - 26mm

Sizes

2400 x 600 mm

System Weight

17mm - 21 kg/m² | 22mm - 26 kg/m² | 26mm - 31 kg/m²

Certification

Class B-15 according to IMO Res. 754 (18)

Core material

Calcium silicate, rot, moisture and impact resistant

Application

Sound-absorbing floating floor (Can be used in combination with BISCO MA)

This panel with an RW value of 34 dB is made up of calcium silicate core, with an aluminum plate on both sides, glued with a sound-insulating adhesive.

The panels have a groove on all sides and are connected by means of an aluminum spring and fixed with steel screws with countersunk head.

PRODUCT FEATURES

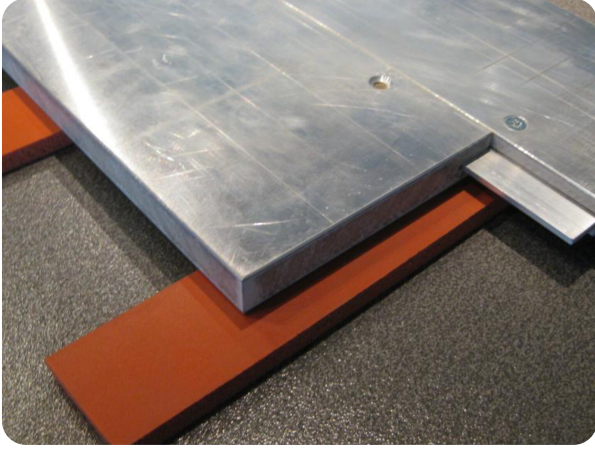
The floating floor can optionally be equipped with an integrated and IMO B-15 approved inspection hatch. This hatch can be used by means of specially developed stainless steel profiles that fit into the standard panel grooves and based on the standard panel width of the floor. The maximum length of the inspection hatch is 520 x 590 mm.

The panels are supplied with sturdy corner protection and the panels are pre-drilled and grooved all around. After installing the panels and the aluminum strip, the spring connection must be drilled (diameter 4.5 mm). After this, the panels can be joined with the supplied thread-forming screws M5 x 12 mm and M5 x 16mm).

It is recommended to protect the floor with hardboard panels after installation to prevent damage to the panels.

- Complies with IMO Res. 754 (18) requirements
- Floating floor (in combination with BISCO MA)
- Easy installation, no special tools
- Excellent mechanical properties
- Weight and noise reduction in accordance with conventional sandwich panels
- Thread-forming screws (M5 x 12 and M5 x 16mm) are included

DRUMA-FLOOR NC/SR
GALLERY



DRUMAFLOOR NC

Thickness

17 mm

Sizes

2400 x 600 mm

System Weight

20 kg/m²

Noise reduction

RW 34 dB

Certification

Non-combustible; volgens IMO Res. MSC A.799 (19)

Core material

Calcium silicate, rot, moisture and impact resistant

Application

Floor system *, to be installed on trusses or rock wool

This panel is constructed from a calcium silicate core, with an HPL plate on both sides, with a sanded surface.

The panels are provided with a groove all around and are mounted by means of an aluminum spring and fixed with steel screws with countersunk head.

PRODUCT FEATURES

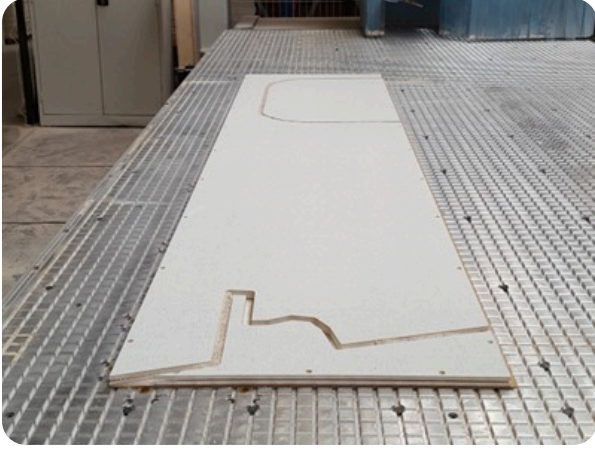
- Complies with IMO Res. MSC A.799 (19),
- Floating floor in combination with Bisco or rock wool,
- Easy installation,
- Excellent mechanical properties,
- Low weight.

INSTALLATION AND PROCESSING

If the panels are placed on rafters, we recommend a rafter distance of 40cm * and they must be sufficiently aligned. If the floor panels are installed on stone wool, the steel sub-floor must be sufficiently flat. The panels are supplied with heavy plastic corner protectors and are pre-drilled all around, with the holes countersunk. After the panels and the aluminum springs have been installed, only the holes need to be drilled (drill diameter 4.5 mm), after which the panels can be fixed with the supplied thread-forming screws (M 5x12 mm). It is recommended to cover the floor with hardboard plates afterwards, or if the floor is subjected to extreme loads during construction, underlayment plates to prevent damage. We also supply CoverGuard on request; a flame-retardant plastic protective film with a non-slip structure, with which the whole can be covered (supplied on a roll (110 x 0.91 m)). This means that sparks from welding, burning or grinding can no longer be a hazard.

** At a frame spacing greater than 40cm, a higher floor load than usual or where a higher system weight is required, Drumafloor NC can be used in combination with the Druma basicfloor NC.*

DRUMAFLOOR NC
GALLERY



PLURATECT MARINE LIGHT

TECHNICAL DATA

Colour

White core with Promat Blue finish

Surface conditions

Smooth

Normal density (tolerances)

500 ($\pm 10\%$) kg/m³

Reaction to fire

None-combustible according to MED certificates module B and D - ask to Drumarkon more information

Class divisions

B15 Bulkhead:19mm
C: 12.5 - 19mm

Panels joint

Solid Spline / "C"-Spline or Omega

Thermal conductivity

0.25 W/mK

Compress resistance

>2.4 MPa

Young Modulus (MD) (EN 15283-1)

1500 MPa

Bending strength (MD) (EN 15283-1)

5.5 MPa

Alkalinity - Surface / Core

1500 MPa

ACOUSTIC PROPERTIES

Thickness

19mm - 19+19mm (+10mm air gap)

Rw Index (ISO 717/1)

27 - 36 dB

STANDARD DIMENSIONS

Thickness (tolerances)

12.5;19 mm (+/- 0.3)

Length (tolerances)

2500 - 2800 - 3050 mm (+/- 0.5)

Width (tolerances)

1220 mm (+/- 0.4)

PLURATECT MARINE LIGHT is a versatile, lightweight, non-combustible fire protection board ideal for installation and applications in the marine market for B and C Class divisions

PROPERTIES

- Smooth and consistent surface
- Suitable for bonding laminates
- High ductility withstanding high deformations
- Easy to process and install
- 100% recyclable

WORKABILITY

PLURATECT MARINE LIGHT can be cut using normal cutting tools or by using circular blades. When bonded with HPL specific blades must be used. During cutting operations use personal protective equipment.

WASTE DISPOSAL

Refer to local legislation. If not available. The board is not classified as a dangerous substance and so no special provisions are required regarding the carriage and disposal of the product to landfill.

STORAGE

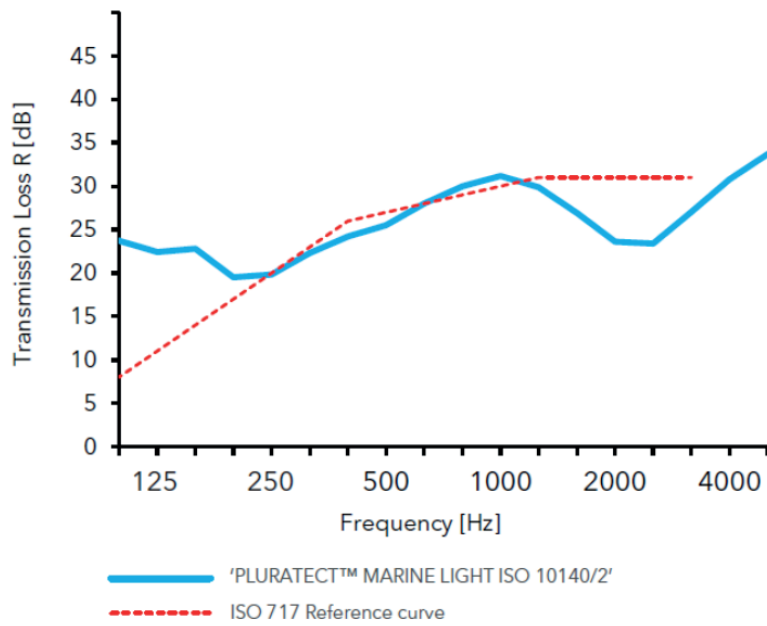
Store on a flat surface, in a dry area.

AREA OF APPLICATION

- B and C Class constructions
- Fire-rated linings and bulkheads
- Public areas, standard and luxury cabins
- Non-combustible furniture

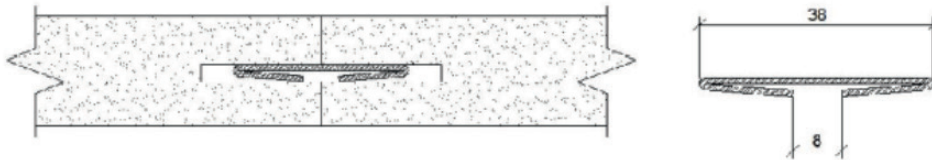
ACOUSTIC PROPERTIES

19mm, $R_w=27$ [dB]



CLASS DIVISIONS - JOINT DRAWINGS

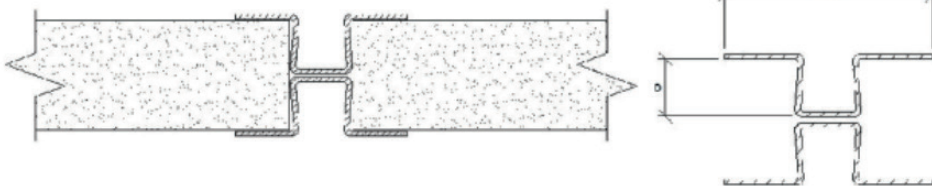
"C" spline



Solid spline



Omega joint



PLURATECT MARINE LIGHT
GALLERY



PROMASIL MARINE

Noise reduction

RW 27 dB (22 mm thickness glued with HPL)

Thickness

22-50 mm

Size

2500 x 600/1000 mm

Density

285 kg/m³

Certification

C class and B15 class (23mm thickness)

Application

Bulkhead and furniture

Basic material

Calcium silicate, rot-, moisture- and impact resistant

ADVANTAGES

- High temperature resistant
- Chemical and moisture resistant
- Good workability
- Minimal gas and smoke emission (in case of fire)

APPLICATIONS

- B15 Class partitions
- Furniture

PROMASIL MARINE GALLERY



PROMARINE 450 / 640

Weight

450 Kg/m³ - 640 Kg /m³

Dimensions

2500 x 1220 mm

Surface

Bare or covered with HPL

Application

Wall, Ceiling, Furniture

Thickness

450: 19mm | **640:** 9,5mm / 12,7mm / 19,1mm

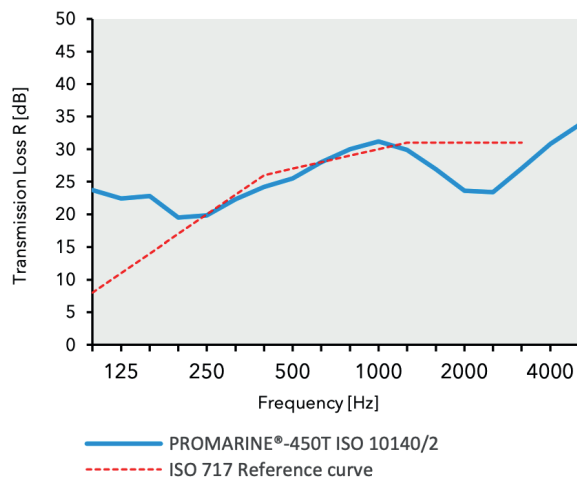
Promarine is a non-combustible calcium silicate panel, reinforced with minerals and fibers. It is available in 450 kg / m³ and 640 kg / m³

PROMARINE 450

- **With a weight of 30% less:** dry density of 450 kg / m³. Although installed on vessels where the weight of the product is of great importance, Promarine 450T offers lightweight solutions.
- Improved heat insulation properties
- **Special thicknesses:** We can supply special thicknesses on request.

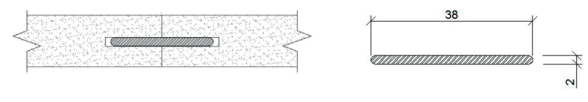
Acoustic properties

19mm, R_w=27 [dB]

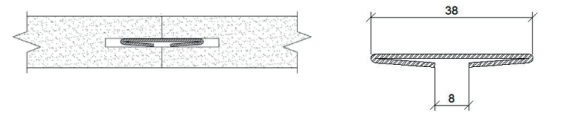


Class divisions - joint drawings

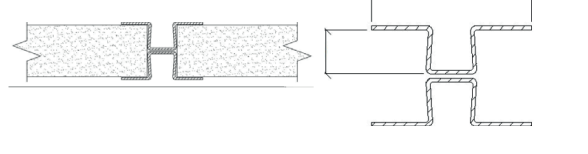
Solid spline



"C" spline



Omega joint

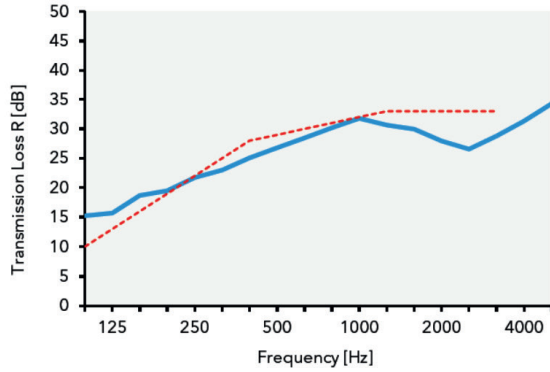


PROMARINE 640

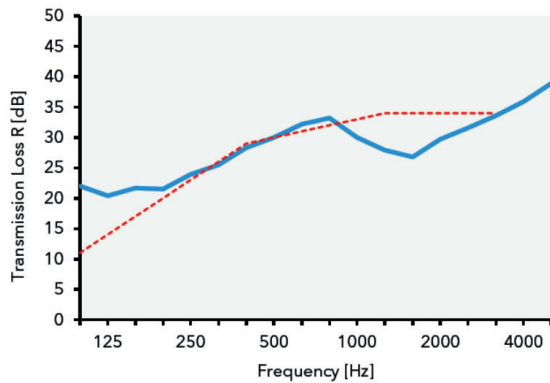
- Nominal dry density of 640 kg / m³.
 - **Certification:** Promarine 640T is non-flammable, B15. (MED certified 96/98 / EC. Directive 98/95 and Directive 2001/53).
- Promarine can be machined with standard tools.

Acoustic properties

12.7mm, R_w=29 [dB]



19.0mm, R_w=30 [dB]



— PROMARINE®-640T ISO 10140/2
- - - ISO 717 Reference curve

Class divisions - joint drawings

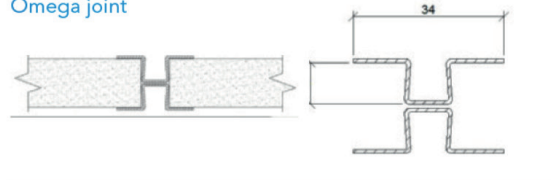
Solid spline



"C" spline



Omega joint



PROMARINE 450 / 640

GALLERY

